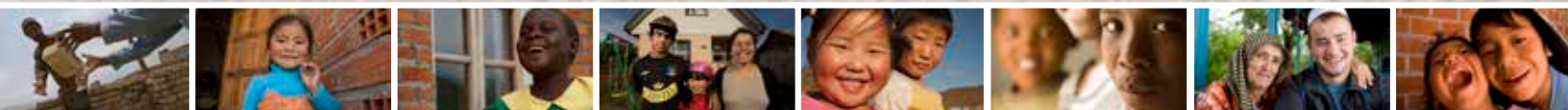


Tithe Priorities

Global Impact Fund

Please consider designating part of your tithe (20 percent or more is suggested) to the Global Impact Fund. Your tithe dollars will be used to help provide families with decent shelter, and 100 percent of these gifts serve families outside the United States.

Highest priority countries	Emerging programs	Promising models
Very-low-income countries with the greatest need.	Innovative programs in these low-income countries are having a significant impact on the housing deficit.	Programs in these low- to middle-income countries are leading the way in collaborative work with partners.
Bangladesh Cambodia Ethiopia Haiti Lesotho Malawi	Kenya Nepal Sri Lanka Tajikistan Uganda Zambia	Colombia Macedonia
Europe, Middle East and Africa	Asia and the Pacific	Latin America and the Caribbean
Additional programs eligible for tithe:	Additional programs eligible for tithe:	Additional programs eligible for tithe:
Armenia Bulgaria Cote d'Ivoire Egypt Ghana Hungary Jordan Kyrgyzstan Lebanon Madagascar Poland Romania South Africa Tanzania	China Fiji India Indonesia Philippines Thailand Vietnam	Argentina Bolivia Brazil Chile Costa Rica Dominican Republic El Salvador Guatemala Guyana Honduras Mexico Nicaragua Paraguay Trinidad and Tobago



Please note that the status of a national program and the list of tithe priority countries can change. HFHI will notify you if any changes affect your tithe contributions and designations.

A WORLD WHERE EVERYONE
HAS A DECENT PLACE TO LIVE.



ADMINISTRATIVE HEADQUARTERS: 270 Peachtree St. N.W. Suite 1300 Atlanta, GA 30303

INTERNATIONAL HEADQUARTERS: 121 Habitat St. Americus, GA 31709-3498 USA
229-924-6935 800-HABITAT fax 229-928-8811 publicinfo@habitat.org habitat.org